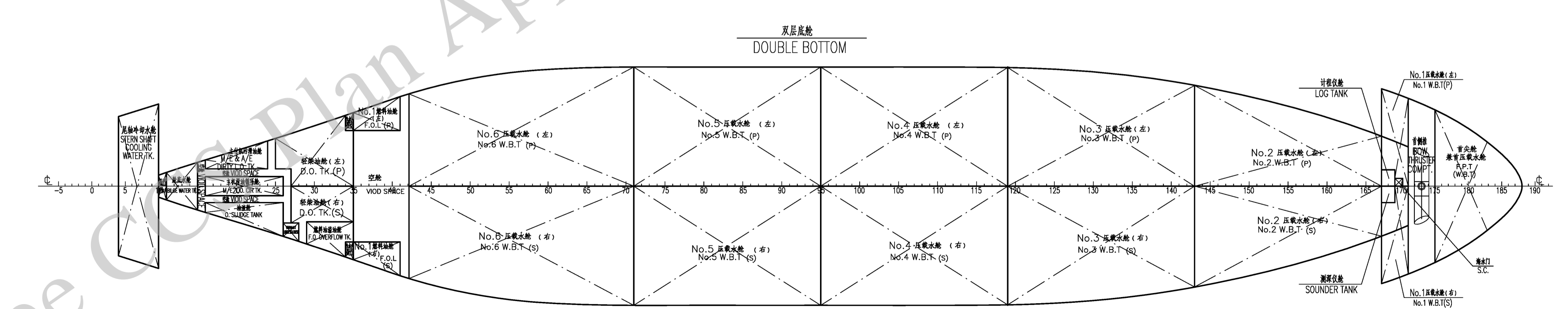
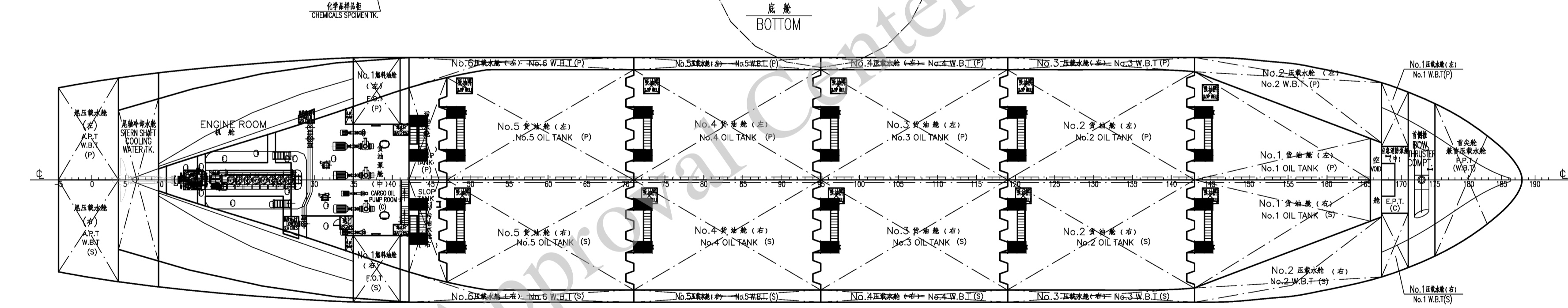
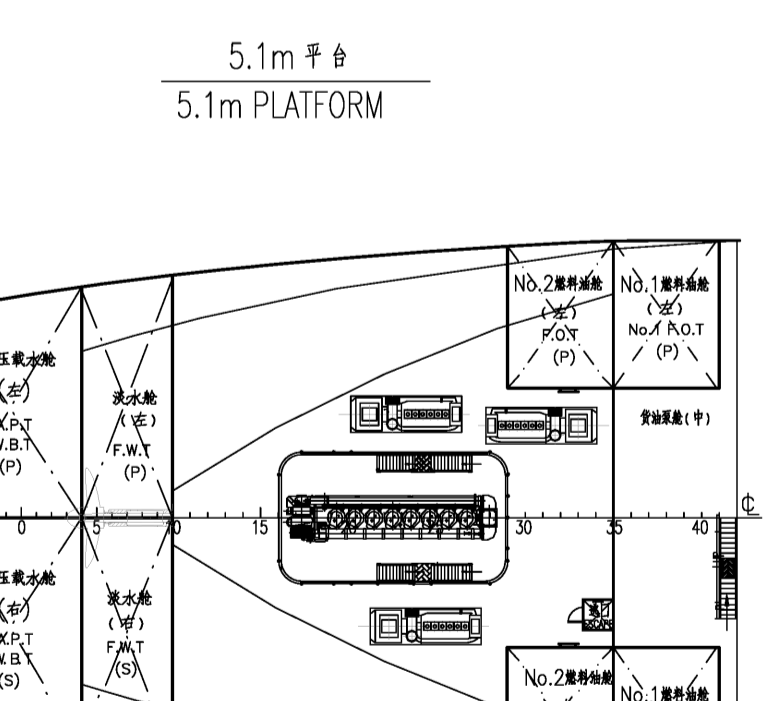
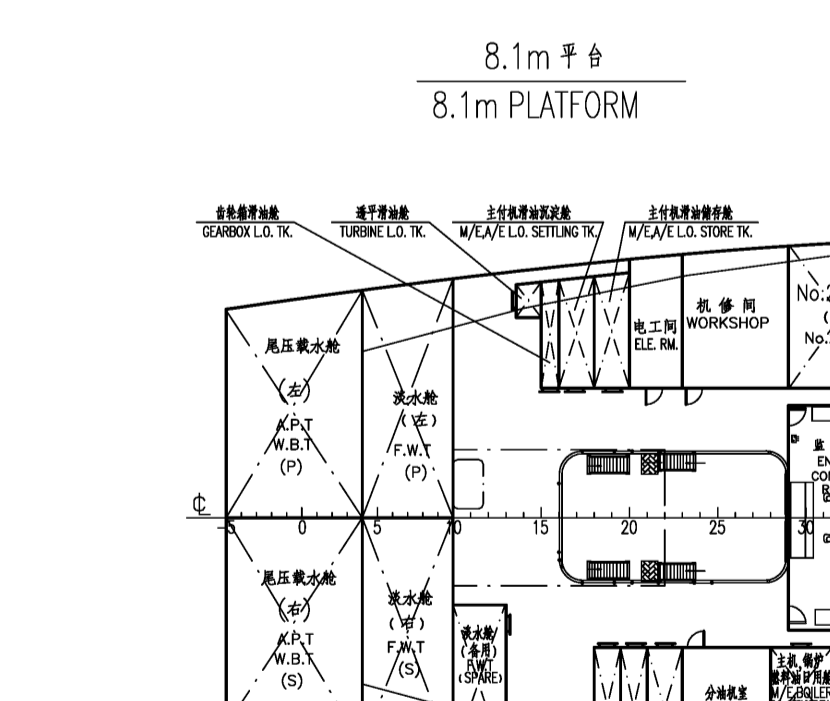
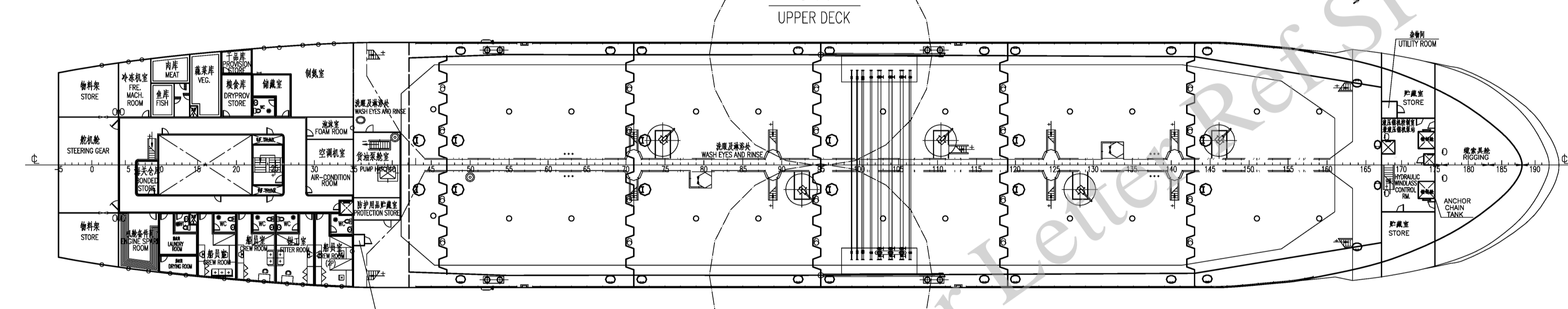
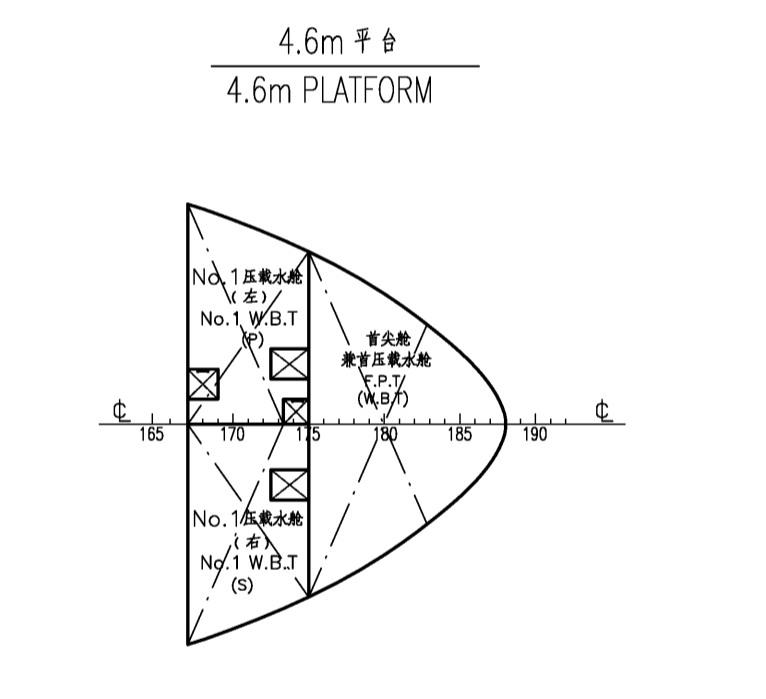
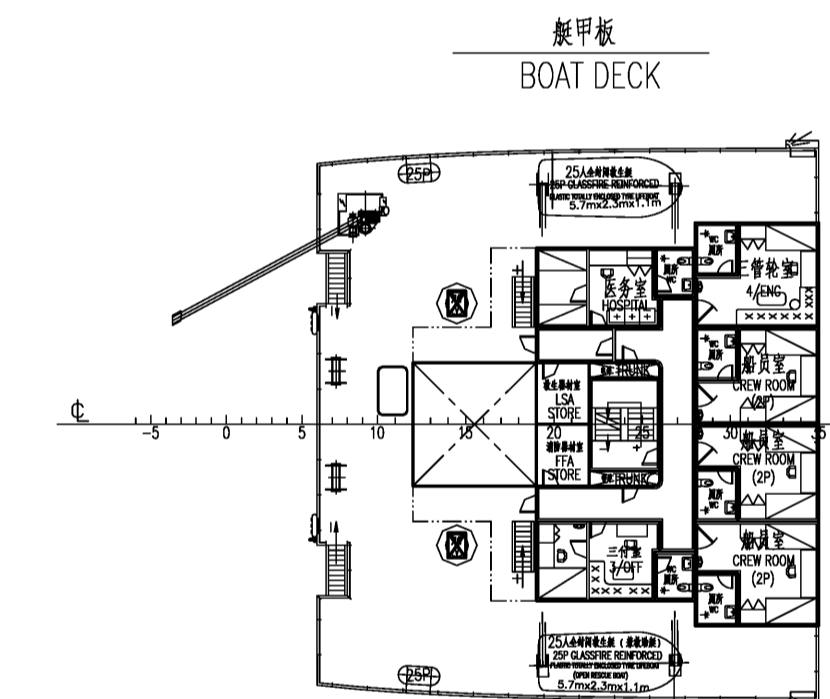
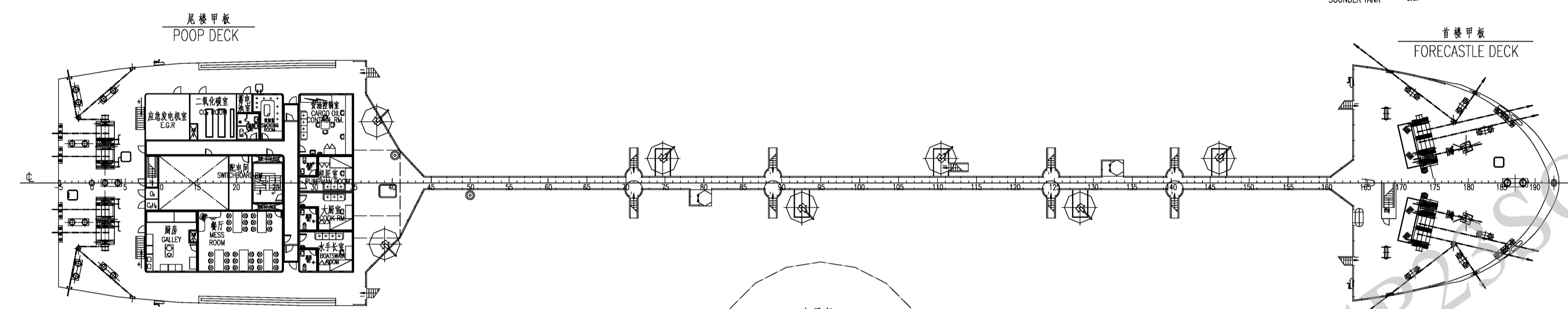
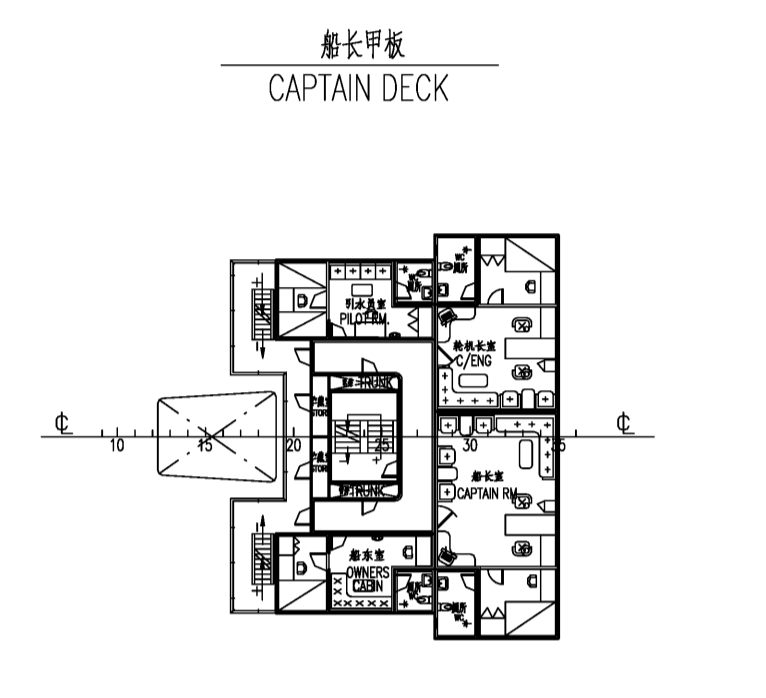
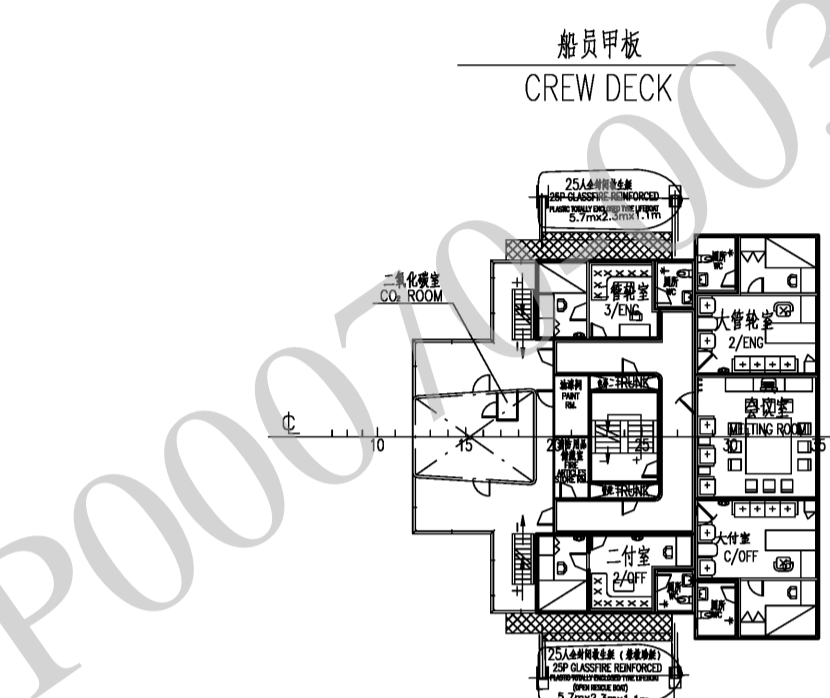
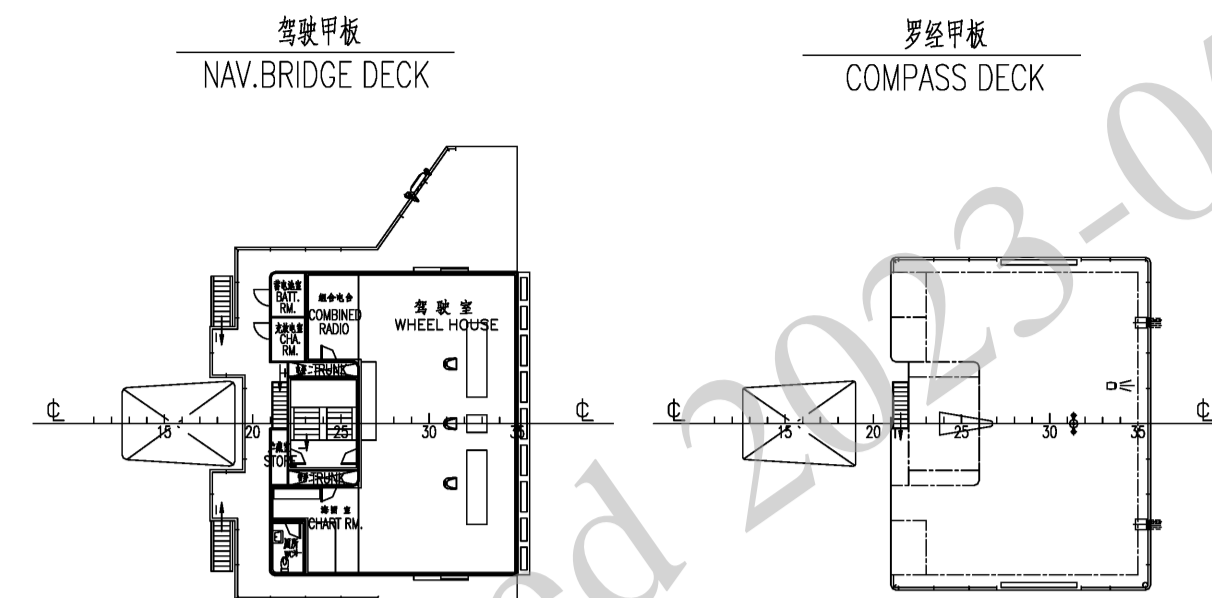
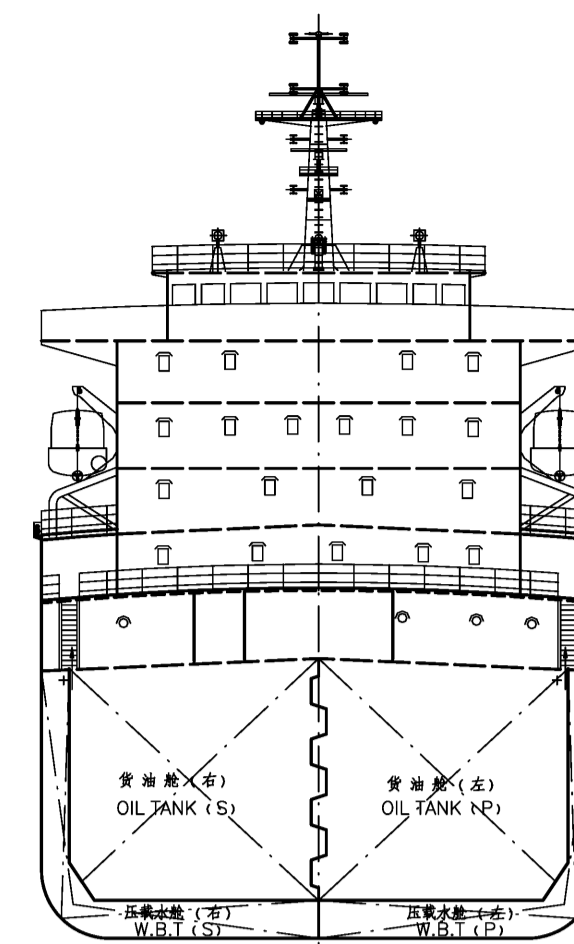
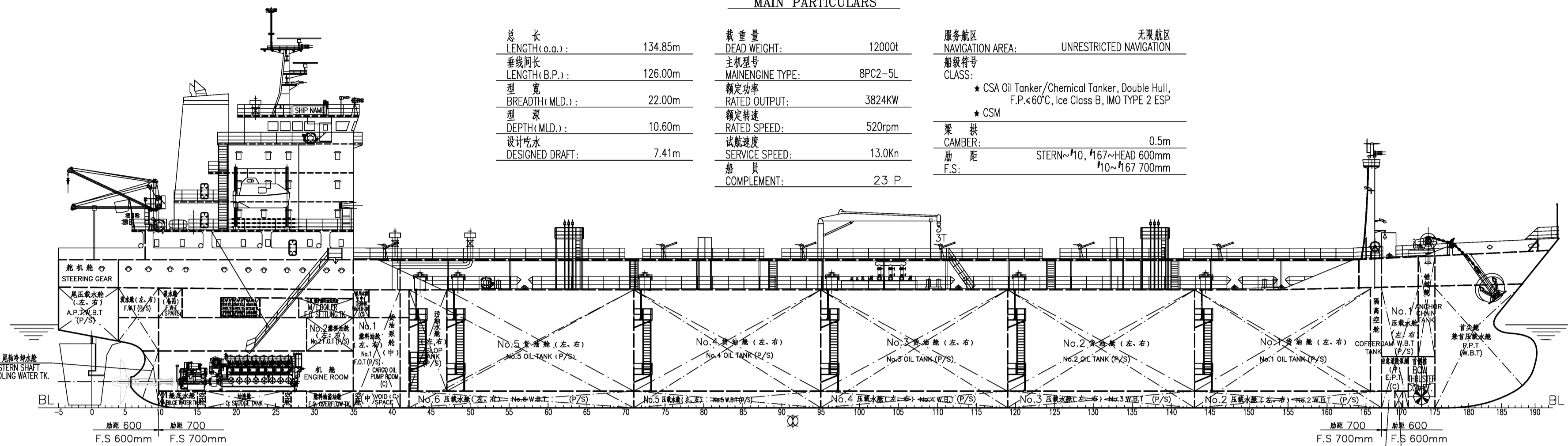




主要尺度 MAIN PARTICULARS

总长 LENGTH(O.A.):	134.85m	载重量 DEAD WEIGHT:	12000t	服务航区 NAVIGATION AREA:	无限制航区
垂线间长 LENGTH(B.P.):	126.00m	主机型号 ENGINE TYPE:	8PC2-5L	船级符号 CLASS:	★ CSA Oil Tanker/Chemical Tanker, Double Hull, F.P.<60°C, Ice Class B, IMO TYPE 2 ESP
型宽 BREADTH(MLD.):	22.00m	额定功率 RATED OUTPUT:	3824KW	船级符号 CLASS:	★ CSM
型深 DEPTH(MLD.):	10.60m	额定转速 RATED SPEED:	520rpm	艙高 CAMBER:	0.5m
设计吃水 DESIGNED DRAFT:	7.41m	试航速度 SERVICE SPEED:	13.0Kn	前距 STERN-110, #167-HEAD 600mm	
		船员 COMPLEMENT:	2,3 P	后距 #10-#167 700mm	



中国船级社
CHINA CLASSIFICATION SOCIETY
A005
批 APPROVED 准
See letter No. SP23SOP00070-003H
Date: 2023-05-30

船厂 BUILDER	SEAHEAD	用途 PURPOSE	供审号 FOR APPROVAL
船东 OWNER		建造编号 HULL No	船级 CLASS
设计 DESIGN		船名 NAME	船级社 CCS
校核 CHECK		中船 121	2023-LX030
审核 REVIEW		总布置图	LJX5358-100-04
审批 APPROVE		图号	图号
日期	2023.04	比例 SCALE	1:300
		PAGE	1/1
		浙江欣海船舶设计研究院 Zhejiang Seahead Ship Design & Research Institute	